



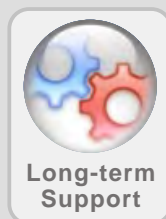
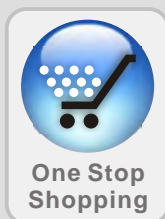
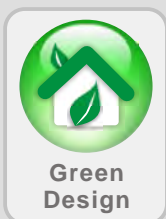
# NAVPIXEL

Marine Computing



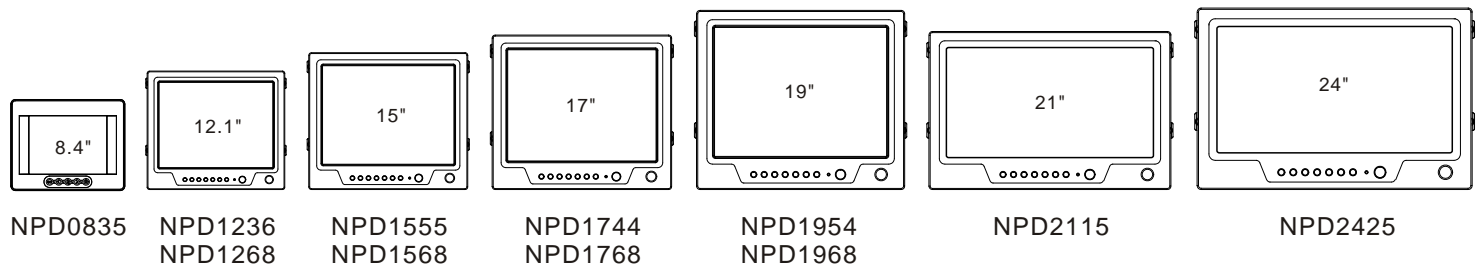
## Marine Advantages:

- Sunlight Readable Marine Display
- High Brightness LCD Technology
- Anti-vibration and Anti-corrosion
- Reliability Products Compliant with IEC60945
- AOT optical Bonding Technology
- Advance Multi Touch Technology



Go to find [www.litemax.com](http://www.litemax.com)

# Marine Display



## NAVPIXEL™ Marine Display Series

### IP65/IP68 Sunlight Readable Marine Display

NAVPIXEL™ NPD is a new series of marine grade display. With high-performance sunlight viewability LED backlight LCD panels, these rugged touch monitors are specially engineered to survive from the most demanding working environment. Housed in the milled billet aluminum case, the slim-profile NAVPIXEL™ NPD displays are all light weight and watertight with fully sealed IP65 connectors (NPD0835 up to IP68). In addition, through integrating touchscreen technology and sunlight readable LCD, these monitors can be used not only leisure activities such as fishing and cruising but also more professional marine projects!

#### Main Features

- IP65 Marine Grade Display (NPD0835 up to IP68)
- 1000 nits Sunlight Readable LCD
- Advanced Optical Bonding (AOT)
- Resistive & PCT Touch/AR Glass Support
- Long Life, Low Power Consumption LED Backlight
- Night Mode Support
- Wide Dimming Potentiometer
- Rich I/O: VGAX2, DVIx2, CVBSx3 (17" above)
- PIP Function Support (17" above)
- -20°C~60°C Wide Operation Temperature
- 9~36V DC input
- Slim Bezel Design
- Anti-Shock and Anti-Vibration Resistance
- Conformal Coating

#### Application

- Marine



# 8.4" Specifications

## Features:

- 1000 nits Sunlight Readable LCD
- LED Backlight
- Wide Operating Temperature
- Advanced Optical Bonding (AOT)
- IR Touch Support
- IP68 Design
- AR Glass Support
- 9-36V DC Input



## IP68 Sunlight Readable Marine Display

Model Number	NPD0835
Description	8.4" IP68 Sunlight Readable Marine Display
<b>LCD Display</b>	
Backlight	8.4" LED Backlight
Active Display Area	170.4x127.8 mm
Brightness	1000 cd/m <sup>2</sup>
Resolution	800x600 (SVGA)
Contrast Ratio	600:1
Pixel Pitch (mm)	0.213(H)x0.213(V)
Viewing Angle	+60°~60°(H), +55°~65°(V)
Display Color	16.2M
Response Time	Tr 10ms/ Tf 20ms
Inputs	VGAX1
<b>Mechanical</b>	
IP Rating	IP68 (NEMA6P Submersible)
Construction	Rugged Aluminum Alloy Chassis
Mounting	RAM mount, VESA mount
Dimension	250mm (W) x 200mm(H) x 64mm(D)
Net Weight	3kg
<b>Power</b>	
Voltage	DC Input 9~36V
Power Consumption	9.5W
<b>Environmental</b>	
Operating Temperature	-20°C~60°C (-4°F~140°F)
Storage Temperature	-30°C~75°C (-22°F~167°F)
Certification	CE/FCC
Marine Type Approval	IEC 60945 BV Marine and IACS-E10 Approval



Specifications are subject to change without notice. All brands or product names are trademarks or registered trademarks of their respective companies.

# 12.1" Specifications

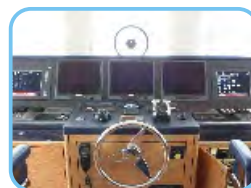
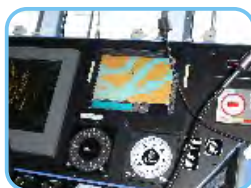
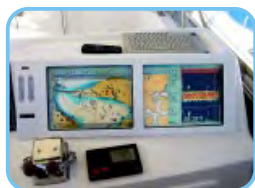
## Features:

- 1000 nits Sunlight Readable LCD
- LED Backlight
- Wide Operating Temperature
- Advanced Optical Bonding (AOT)
- Resistive & PCT Touch Support
- Front IP65 Design
- AR Glass Support
- 9-36V DC Input



## IP65 Sunlight Readable Marine Display

Model Number	NPD1236	NPD1268
Description	12.1" IP65 Sunlight Readable Marine Display	
<b>LCD Display</b>		
Backlight	12.1" LED Backlight	12.1" LED Backlight
Active Display Area	245.76x184.32 mm	245.76x184.32 mm
Brightness	1000 cd/m <sup>2</sup>	1600 cd/m <sup>2</sup>
Resolution	1024x768 (XGA)	1024x768 (XGA)
Contrast Ratio	700:1	700:1
Pixel Pitch (mm)	0.24(H)x0.24(V)	0.24(H)x0.24(V)
Viewing Angle	140°(H), 140°(V)	160°(H), 160°(V)
Display Color	262k	262k
Response Time	Tr 6ms/ Tf 17ms	35ms
Inputs	VGAx1, DVIX1, Composite x3, RS232x1, USBx1	
<b>Mechanical</b>		
IP Rating	Fascial waterproof to IP65 standards when console mounted.	
Construction	Rugged Aluminum Alloy Chassis	
Mounting	Panel (Flush) mount, VESA mount	
Dimension (WxHxD)	297.2mm x 256mm x 56mm	316mmx 272.3mmx 56mm
Net Weight	2.5kg	2.5kg
<b>Power</b>		
Voltage	DC Input 9~36V	DC Input 9~36V
Power Consumption	24W	14W
<b>Environmental</b>		
Operating Temperature	-20°C~60°C (-4°F~140°F)	-20°C~60°C (-4°F~140°F)
Storage Temperature	-20°C~70°C (-4°F~158°F)	-20°C~70°C (-4°F~158°F)
Touch Screen (Optional)	<input type="checkbox"/> Resistive <input type="checkbox"/> PCT	
Certification	CE/FCC	
Marine Type Approval	IEC 60945 BV Marine and IACS-E10 Approval	



# 15" Specifications

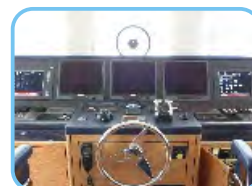
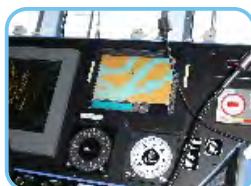
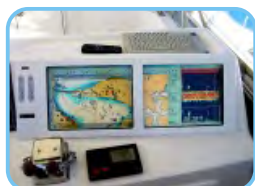
## Features:

- 1000 nits Sunlight Readable LCD
- LED Backlight
- Wide Operating Temperature
- Advanced Optical Bonding (AOT)
- Resistive & PCT Touch Support
- Front IP65 Design
- AR Glass Support
- 9-36V DC Input



## IP65 Sunlight Readable Marine Display

Model Number	NPD1555	NPD1568
<b>Description</b>	15" IP65 Sunlight Readable Marine Display	
<b>LCD Display</b>		
<b>Backlight</b>	15" LED Backlight	15" LED Backlight
<b>Active Display Area</b>	304.128x228.096 mm	304.13x228.1 mm
<b>Brightness</b>	1000 cd/m <sup>2</sup>	1600 cd/m <sup>2</sup>
<b>Resolution</b>	1024x768 (XGA)	1024x768 (XGA)
<b>Contrast Ratio</b>	700:1	700:1
<b>Pixel Pitch (mm)</b>	0.297(H)x0.297(V)	0.297(H)x0.297(V)
<b>Viewing Angle</b>	160°(H), 160°(V)	160°(H), 160°(V)
<b>Display Color</b>	16.2M	16.7M
<b>Response Time</b>	Tr 8ms/ Tf 17ms	Tr 8ms/ Tf 17ms
<b>Inputs</b>	VGAx1, DVIX1, Composite x3, RS232x1, USBx1	
<b>Mechanical</b>		
<b>IP Rating</b>	Fascial waterproof to IP65 standards when console mounted.	
<b>Construction</b>	Rugged Aluminum Alloy Chassis	
<b>Mounting</b>	Panel (Flush) mount, VESA mount	
<b>Dimension (WxHxD)</b>	352.8mmx 303.3mmx 56.4mm	TBD
<b>Net Weight</b>	3.5kg	TBD
<b>Power</b>		
<b>Voltage</b>	DC Input 9~36V	DC Input 9~36V
<b>Power Consumption</b>	40.8W	TBD
<b>Environmental</b>		
<b>Operating Temperature</b>	-20°C~60°C (-4°F~140°F)	-20°C~60°C (-4°F~140°F)
<b>Storage Temperature</b>	-20°C~70°C (-4°F~158°F)	-20°C~70°C (-4°F~158°F)
<b>Touch Screen (Optional)</b>	<input type="checkbox"/> Resistive <input type="checkbox"/> PCT	
<b>Certification</b>	CE/FCC	
<b>Marine Type Approval</b>	IEC 60945 BV Marine and IACS-E10 Approval	



Specifications are subject to change without notice. All brands or product names are trademarks or registered trademarks of their respective companies.

# 17" Specifications

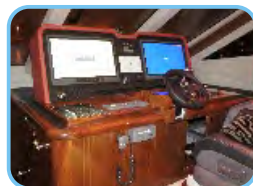
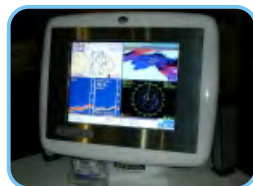
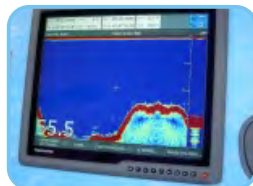
## Features:

- 1000 nits Sunlight Readable LCD
- LED Backlight
- Wide Operating Temperature
- Advanced Optical Bonding (AOT)
- Resistive & PCT Touch Support
- Front IP65 Design
- 9-36V DC Input
- Picture In Picture Function



## IP65 Sunlight Readable Marine Display

Model Number	NPD1744	NPD1768
<b>Description</b>	17" IP65 Sunlight Readable Marine Display	
<b>LCD Display</b>		
<b>Backlight</b>	17" LED Backlight	17" LED Backlight
<b>Active Display Area</b>	337.92x270.336 mm	337.9x270.3 mm
<b>Brightness</b>	1000 cd/m <sup>2</sup>	1600 cd/m <sup>2</sup>
<b>Resolution</b>	1280x1024 (SXGA)	1280x1024 (SXGA)
<b>Contrast Ratio</b>	800:1	1000:1
<b>Pixel Pitch (mm)</b>	0.264(H)x0.264(V)	0.264(H)x0.264(V)
<b>Viewing Angle</b>	160°(H), 160°(V)	160°(H), 160°(V)
<b>Display Color</b>	16.7M	16.7M
<b>Response Time</b>	Tr 3.5ms/ Tf 1.5ms	Tr 3.6ms/ Tf 1.4ms
<b>Inputs</b>	VGAx2, DVIX2, Composite x3, RS232x1, USBx1	
<b>Picture in Picture</b>	3 Stages (child, split and wide screen)	
<b>Mechanical</b>		
<b>IP Rating</b>	Fascial waterproof to IP65 standards when console mounted.	
<b>Construction</b>	Rugged Aluminum Alloy Chassis	
<b>Mounting</b>	Panel (Flush) mount, VESA mount	
<b>Dimension (WxHxD)</b>	384mm x 348.1mm x 57.8mm	TBD
<b>Net Weight</b>	4.5kg	TBD
<b>Power</b>		
<b>Voltage</b>	DC Input 9~36V	DC Input 9~36V
<b>Power Consumption</b>	50W	TBD
<b>Environmental</b>		
<b>Operating Temperature</b>	-10°C~50°C (-14°F~122°F)	-10°C~50°C (-14°F~122°F)
<b>Storage Temperature</b>	-20°C~70°C (-4°F~158°F)	-20°C~70°C (-4°F~158°F)
<b>Touch Screen (Optional)</b>	<input type="checkbox"/> Resistive <input type="checkbox"/> PCT	
<b>Certification</b>	CE/FCC	
<b>Marine Type Approval</b>	IEC 60945 BV Marine and IACS-E10 Approval	



# 19" Specifications

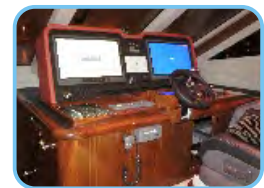
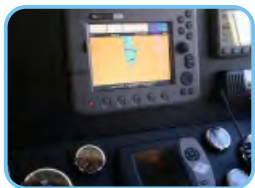
## Features:

- 1000 nits Sunlight Readable LCD
- LED Backlight
- Wide Operating Temperature
- Advanced Optical Bonding (AOT)
- Resistive & PCT Touch Support
- Front IP65 Design
- 9-36V DC Input
- Picture In Picture Function



## IP65 Sunlight Readable Marine Display

Model Number	NPD1954	NPD1968
<b>Description</b>	19" IP65 Sunlight Readable Marine Display	
<b>LCD Display</b>		
<b>Backlight</b>	19" LED Backlight	19" LED Backlight
<b>Active Display Area</b>	376.32x301.06 mm	376.3x301.1 mm
<b>Brightness</b>	1000 cd/m <sup>2</sup>	1600 cd/m <sup>2</sup>
<b>Resolution</b>	1280x1024 (SXGA)	1280x1024 (SXGA)
<b>Contrast Ratio</b>	1000:1	1000:1
<b>Pixel Pitch (mm)</b>	0.294(H)x0.294(V)	0.294(H)x0.294(V)
<b>Viewing Angle</b>	170°(H), 160°(V)	170°(H), 160°(V)
<b>Display Color</b>	16.7M	16.7M
<b>Response Time</b>	Tr 3.6ms/ Tf 1.4ms	Tr 3.6ms/ Tf 1.4ms
<b>Inputs</b>	VGAx2, DVIX2, Composite x3, RS232x1, USBx1	
<b>Picture in Picture</b>	3 Stages (child, split and wide screen)	
<b>Mechanical</b>		
<b>IP Rating</b>	Fascial waterproof to IP65 standards when console mounted.	
<b>Construction</b>	Rugged Aluminum Alloy Chassis	
<b>Mounting</b>	Panel (Flush) mount, VESA mount	
<b>Dimension (WxHxD)</b>	421.9mmx 375.5mmx 56.8mm	TBD
<b>Net Weight</b>	5.5kg	TBD
<b>Power</b>		
<b>Voltage</b>	DC Input 9~36V	DC Input 9~36V
<b>Power Consumption</b>	55W	TBD
<b>Environmental</b>		
<b>Operating Temperature</b>	-10°C~50°C (-14°F~122°F)	-10°C~50°C (-14°F~122°F)
<b>Storage Temperature</b>	-20°C~70°C (-4°F~158°F)	-20°C~70°C (-4°F~158°F)
<b>Touch Screen (Optional)</b>	<input type="checkbox"/> Resistive <input type="checkbox"/> PCT	
<b>Certification</b>	CE/FCC	
<b>Marine Type Approval</b>	IEC 60945 BV Marine and IACS-E10 Approval	



Specifications are subject to change without notice. All brands or product names are trademarks or registered trademarks of their respective companies.

# 21" Specifications

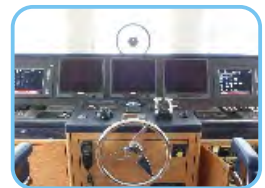
## Features:

- 1000 nits Sunlight Readable LCD
- LED Backlight
- Wide Operating Temperature
- Advanced Optical Bonding (AOT)
- Resistive & PCT Touch Support
- Front IP65 Design
- 9-36V DC Input
- Picture In Picture Function



## IP65 Sunlight Readable Marine Display

Model Number	NPD2115
Description	21.5" IP65 Sunlight Readable Marine Display
<b>LCD Display</b>	
Backlight	21.5" LED Backlight
Active Display Area	476.64x268.11 mm
Brightness	1000 cd/m <sup>2</sup>
Resolution	1920x1080(Full HD)
Contrast Ratio	1000:1
Pixel Pitch (mm)	0.248(H) x 0.248(V)
Viewing Angle	170°(H), 160°(V)
Display Color	16.7M
Response Time	5 ms
Inputs	VGAX2, DVIX2, Composite x3, RS232x1
Picture in Picture	3 Stages (child, split and wide screen)
<b>Mechanical</b>	
IP Rating	Fascial waterproof to IP65 standards when console mounted.
Construction	Rugged Aluminum Alloy Chassis
Mounting	Panel (Flush) mount, VESA mount
Dimension (WxHxD)	525.8mm x 345.2 mm x 56.4mm
Net Weight	5.5kg
<b>Power</b>	
Voltage	DC Input Voltage: DC 9~36V
Power Consumption	26W
<b>Environmental</b>	
Operating Temperature	-10°C~50°C (-14°F~122°F)
Storage Temperature	-20°C~70°C (-4°F~158°F)
Touch Screen (Optional)	<input type="checkbox"/> Resistive <input type="checkbox"/> PCT
Certification	CE/FCC
Marine Type Approval	IEC 60945 BV Marine and IACS-E10 Approval

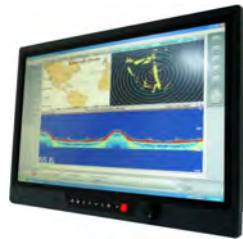




# 24" Specifications

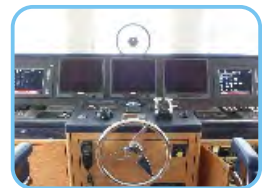
## Features:

- 1000 nits Sunlight Readable LCD
- LED Backlight
- Wide Operating Temperature
- Advanced Optical Bonding (AOT)
- Resistive Touch Support
- Front IP65 Design
- 9-36V DC Input
- Picture In Picture Function



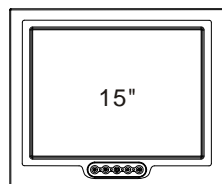
## IP65 Sunlight Readable Marine Display

<b>Model Number</b>	<b>NPD2425</b>
<b>Description</b>	24" IP65 Sunlight Readable Marine Display
<b>LCD Display</b>	
<b>Backlight</b>	24" LED Backlight
<b>Active Display Area</b>	531.36x298.89 mm
<b>Brightness</b>	1000 cd/m <sup>2</sup>
<b>Resolution</b>	1920x1080(Full HD)
<b>Contrast Ratio</b>	3000:1
<b>Pixel Pitch (mm)</b>	0.276(H) x 0.276(V)
<b>Viewing Angle</b>	178°(H), 178°(V)
<b>Display Color</b>	16.7M
<b>Response Time</b>	25 ms
<b>Inputs</b>	VGAX2, DVIX2, Composite x3, RS232x1
<b>Picture in Picture</b>	3 Stages (child, split and wide screen)
<b>Mechanical</b>	
<b>IP Rating</b>	Fascial waterproof to IP65 standards when console mounted.
<b>Construction</b>	Rugged Aluminum Alloy Chassis
<b>Mounting</b>	Panel (Flush) mount, VESA mount
<b>Dimension (WxHxD)</b>	584.2mm x 374.8 mm x 57.7mm
<b>Net Weight</b>	7.8kg
<b>Power</b>	
<b>Voltage</b>	DC Input Voltage: DC 9~36V
<b>Power Consumption</b>	50W
<b>Environmental</b>	
<b>Operating Temperature</b>	-10°C~50°C (-14°F~122°F)
<b>Storage Temperature</b>	-20°C~70°C (-4°F~158°F)
<b>Touch Screen (Optional)</b>	<input type="checkbox"/> Resistive <input type="checkbox"/> PCT
<b>Certification</b>	CE/FCC
<b>Marine Type Approval</b>	IEC 60945 BV Marine and IACS-E10 Approval

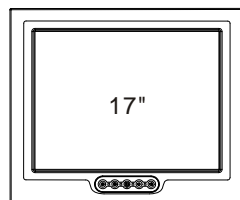


Specifications are subject to change without notice. All brands or product names are trademarks or registered trademarks of their respective companies.

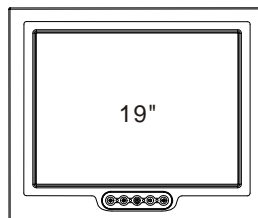
# Marine Panel PC



NPS1535



NPS1735



NPS1935

## NAVPIXEL™ Marine Panel PC

### IP65 Sunlight Readable Marine Grade Panel PC

NPS is a new series of NAVPIXEL™ Intel® Celeron M/ Core 2 Duo based design panel PC. This extremely high performance with low power consumption computing solution also supports SATA interface that provides higher data processing rate and lower CPU usage. Because of the special aluminum alloy casing design, NPS series can resist corrosion from most acids and alkaline working environments. In addition, the easy cleaning attribute makes it the first choice for strict hygiene workplaces such as hospital, marine industry, abattoirs and other food processing plants.

#### Main Features

- 1000nits Sunlight Readable LCD
- IP65 Front Waterproof Display
- Resistive Touch Support
- Advanced Optical Bonding (AOT) optional
- Resistive Touch/ AR Glass Support
- Long Life, Low Power Consumption LED Backlight
- Intel® Celeron M/ Core 2 Duo Based Design
- AC or DC Input
- Slim Bezel Design
- Anti-Shock and Anti-Vibration Resistance

#### Applications

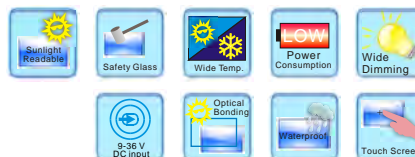
- Marine
- Food Processing Factory
- Chemical
- Pharmaceutical
- POS



# 15" Specifications

## Features:

- 1000 nits Sunlight Readable Panel PC
- Processor: Intel® Celeron M/ Core 2 Duo
- Memory: SODIMM DDRII667 up to 4GB
- Rich I/O Interface
- IP65 Front Waterproof
- AC 100~200V Input or DC 9-36V



## IP65 Sunlight Readable Marine Panel PC

Model Number	NPS1535
Description	15" IP65 Sunlight Readable Marine Panel PC
<b>LCD Display</b>	
Backlight	15" LED Backlight
Active Display Area	304.128(H)x228.096(V)
Brightness	1000 nits
Resolution	1024x768 (XGA)
Contrast Ratio	700:1 (Typ)
Touch Screen	5-Wire, Analog Resistive / AR Glass
Optical	AOT (Optional)
<b>System</b>	
Processor	Intel® Celeron M / Core 2 Duo
Chip Set	Intel® 945GM + ICH7M
Memory	DDR II DIMM 1GB up to 4GB
Ethernet	Intel® 82573L 10/100/1000Base-TX RJ45x2
Storage	SATA 2.5" HDD (Optional)
I/O Port	Audio Phone Jack (Line-in, Line-out, MIC-in) x 1 RJ45 x2, USB x4, COMx2 (RS232 x1, RS232 /422/485 x1) DVI-I x1, VGA-out x 1, KB/MS PS2 x 1, Power AC-in x1
BIOS	Award
Wake on LAN	Yes
Watchdog Timer	Generates a time-out system reset
H/W Status Monitor	Supports power supply voltages, fan speed and temperature monitoring
Expansion Interface	Mini PCI (internal)
<b>Power</b>	
Voltage	AC Input: AC 100~ 240V; DC Input (Optional)
<b>Mechanical</b>	
IP Rating	Fascial waterproof to IP65 standards when console mounted
Construction	Aluminum Alloy Chassis
Mounting	Panel (Flush) Mount , VESA75/VESA100, Stand Mount
Dimension	386.5mm (W) x 320.2mm(H) x 91.6mm(D)
Net Weight	5.4kg
<b>Environmental</b>	
Operating Temperature	-10°C~40°C (14°F~104°F)
Storage Temperature	-20°C ~ 80°C (-4°F ~158°F)
Operating Humidity	5~95% @ 40°C, non-condensing
Certification	Designed to meet CE/FCC

Specifications are subject to change without notice. All brands or product names are trademarks or registered trademarks of their respective companies.

# 17" Specifications

## Features:

- 1000 nits Sunlight Readable Panel PC
- Processor: Intel® Celeron M/ Core 2 Duo
- Memory: SODIMM DDRII667 up to 4GB
- Rich I/O Interface
- IP65 Front Waterproof
- AC 100~200V Input or DC 9-36V
- Picture In Picture Function



## IP65 Sunlight Readable Marine Panel PC

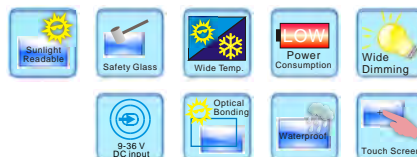
Model Number	NPS1735
Description	17" IP65 Sunlight Readable Marine Panel PC
<b>LCD Display</b>	
Backlight	17" LED Backlight
Active Display Area	337.92(H)x270.336(V)
Brightness	1000 nits
Resolution	1280x1024(SXGA)
Contrast Ratio	1000:1 (Typ)
Touch Screen	5-Wire, Analog Resistive / AR Glass
Optical	AOT (Optional)
<b>System</b>	
Processor	Intel® Celeron M / Core 2 Duo
Chip Set	Intel® 945GM + ICH7M
Memory	DDR II DIMM 1GB up to 4GB
Ethernet	Intel® 82573L 10/100/1000Base-TX RJ45x2
Storage	SATA 2.5" HDD (Optional)
I/O Port	Audio Phone Jack (Line-in, Line-out, MIC-in) x 1 RJ45 x2, USB x4, COMx2 (RS232 x1, RS232 /422/485 x1) DVI-I x1, VGA-out x 1, KB/MS Ps2 x 1, Power AC-in x 1
BIOS	Award
Wake on LAN	Yes
Watchdog Timer	Generates a time-out system reset
H/W Status Monitor	Supports power supply voltages, fan speed and temperature monitoring
Expansion Interface	Mini PCI (internal)
<b>Power</b>	
Voltage	AC Input: AC 100~ 240V; DC Input (Optional)
<b>Mechanical</b>	
IP Rating	Fascial waterproof to IP65 standards when console mounted
Construction	Aluminum Alloy Chassis
Mounting	Panel (Flush) Mount , VESA75/VESA100, Stand Mount
Dimension	409.5mm (W) x 363.1mm(H) x 91.3mm(D)
Net Weight	6.3kg
<b>Environmental</b>	
Operating Temperature	-10°C~40°C (14°F~104°F)
Storage Temperature	-20°C ~ 80°C (-4°F ~158°F)
Operating Humidity	5~95% @ 40°C, non-condensing
Certification	Designed to meet CE/FCC

Specifications are subject to change without notice. All brands or product names are trademarks or registered trademarks of their respective companies.

# 19" Specifications

## Features:

- 1000 nits Sunlight Readable Panel PC
- Processor: Intel® Celeron M/ Core 2 Duo
- Memory: SODIMM DDRII667 up to 4GB
- Rich I/O Interface
- IP65 Front Waterproof
- AC 100~200V Input or DC 9-36V
- Picture In Picture Function



## IP65 Sunlight Readable Marine Panel PC

Model Number	NPS1935
Description	19" IP65 Sunlight Readable Marine Panel PC
<b>LCD Display</b>	
Backlight	19" LED Backlight
Active Display Area	376.32(H)x301.06(V)
Brightness	1000 nits
Resolution	1280x1024 (SXGA)
Contrast Ratio	1000:1 (Typ)
Touch Screen	5-Wire, Analog Resistive / AR Glass
Optical	AOT (Optional)
<b>System</b>	
Processor	Intel® Celeron M / Core 2 Duo
Chip Set	Intel® 945GM + ICH7M
Memory	DDR II DIMM 1GB up to 4GB
Ethernet	Intel® 82573L 10/100/1000Base-TX RJ45x2
Storage	SATA 2.5" HDD (Optional)
I/O Port	Audio Phone Jack (Line-in, Line-out, MIC-in) x 1 RJ45 x2, USB x4, COMx2 (RS232 x1, RS232 /422/485 x1) DVI-I x1, VGA-out x 1, KB/MS PS2 x 1, Power AC-in x1
BIOS	Award
Wake on LAN	Yes
Watchdog Timer	Generates a time-out system reset
H/W Status Monitor	Supports power supply voltages, fan speed and temperature monitoring
Expansion Interface	Mini PCI (internal)
<b>Power</b>	
Voltage	AC Input: AC 100~ 240V; DC Input (Optional)
<b>Mechanical</b>	
IP Rating	Fascial waterproof to IP65 standards when console mounted
Construction	Aluminum Alloy Chassis
Mounting	Panel (Flush) Mount , VESA75/VESA100, Stand Mount
Dimension	447mm (W) x 390.6mm(H) x 91.5mm(D)
Net Weight	7.2kg
<b>Environmental</b>	
Operating Temperature	-10°C~40°C (14°F~104°F)
Storage Temperature	-20°C ~ 80°C (-4°F ~158°F)
Operating Humidity	5~95% @ 40°C, non-condensing
Certification	Designed to meet CE/FCC

Specifications are subject to change without notice. All brands or product names are trademarks or registered trademarks of their respective companies.

# Ordering Information

## NPD Series

Part Number	Description
NPD0835-ETAW-A01	8.4", 1000nits, SVGA, Touch-usb. LID08A, AD5621G, WP, AOT, V01
NPD0835-EGAW-A01	8.4", 1000nits, SVGA, LID08A, O/F, AR Glass, AD5621G, WP, AOT, V01
NPD1236-EGAW-G01	12", 1000nits, XGA, AR glass. LID12B02, AD2662, WP, AOT, V01
NPD1236-EGAW-G011	12", 1000nits, XGA, AR glass. LID12B02, AD2662, WP, AOT. with adaptor, V01
NPD1236-ETAW-G01	12", 1000nits, XGA, Touch-usb. Transparency:80%, LID12B02. AD2662, WP, AOT, V01
NPD1236-ETAW-G011	12", 1000nits, XGA, Touch-usb. (Transparency:80%) LID12B02. AD2662, WP, AOT, with adaptor. V01
NPD1555-EGAW-G01	15", 1000nits, XGA, AR glass. LID15B01, AD2662, WP, AOT, V01
NPD1555-EGAW-G011	15", 1000nits, XGA, AR glass. LID15B01, AD2662, WP, AOT. with adaptor, V01
NPD1555-ETAW-G01	15", 1000nits, XGA, Touch-usb. (Transparency:80%), LID15B01. AD2662, WP, AOT, V01
NPD1555-ETAW-G011	15", 1000nits, XGA, Touch-usb. (Transparency:80%), LID15B01. AD2662, WP, AOT, with adaptor. V01
NPD1744-EGAW-H01	17", 1000nits, SXGA, AR glass. LID17B01, AD8668, WP, AOT, V01
NPD1744-EGAW-H011	17", 1000nits, SXGA, AR glass. LID17B01, AD8668, WP, AOT. with adaptor, V01
NPD1744-ETAW-H01	17", 1000nits, SXGA, Touch-usb. Transparency:80, LID17B01. AD8668, WP, AOT, V01
NPD1744-ETAW-H011	17", 1000nits, SXGA, Touch-usb. (Transparency:80%), LID17B01. AD8668, WP, AOT, with adaptor. V01
NPD1954-EGAW-H01	19", 1000nits, SXGA, AR glass. LID19B02, AD8668, WP, AOT, V01
NPD1954-EGAW-H011	19", 1000nits, SXGA, AR glass. LID19B02, AD8668, WP, AOT. with adaptor, V01
NPD1954-ETAW-H01	19", 1000nits, SXGA, Touch-usb. (Transparency:80%), LID19B02. AD8668, WP, AOT, V01
NPD1954-ETAW-H011	19", 1000nits, SXGA, Touch-usb. (Transparency:80%), LID19B02. AD8668, WP, AOT, with adaptor. V01
NPD2115-EGAW-H01	21.5", 1000nits, FHD, AR Glass. LID21, AD8668, WP, VR, AOT, V01
NPD2115-EGAW-H011	21.5", 1000nits, FHD, AR Glass. LID21, AD8668, WP, VR, AOT. with adaptor, V01
NPD2115-ETAW-H01	21.5", 1000nits, FHD, Touch-usb. (Transparency:80%), LID21. AD8668, WP, VR, AOT, V01
NPD2115-ETAW-H011	21.5", 1000nits, FHD. T/OT-5w-res-usb. (Transparency:80%), LID21. AD8668, WP, VR, AOT. with adaptor, V01
NPD2425-EGAW-H01	24", 1000nits, FHD, AR Glass. LID24, AD8668, WP, VR, AOT, V01
NPD2425-EGAW-H011	24", 1000nits, FHD, AR Glass. LID24, AD8668, WP, VR, AOT. with adaptor, V01
NPD2425-ETAW-H01	24", 1000nits, FHD. T/OT-5w-res-usb. (Transparency:80%), LID24. AD8668, WP, VR, AOT, V01
NPD2425-ETAW-H011	24", 1000nits, FHD. T/OT-5w-res-usb. (Transparency:80%), LID24. AD8668, WP, VR, AOT. with adaptor, V01

# Ordering Information

## NPS Series

Part Number	Description
NPS1535-ETAW-142-A01	15"LED B/L 1000nits, Touch.Screen(Transparency:80%),Intel.Celeron M 1.86GHz,DDR II DIMM.1GB,RJ45*2,USB*4,COM*2,AC.100~240V,HDD/250GB,AOT,WP
NPS1535-ETAW-142-A02	15"LED B/L 1000nits.Touch.Screen(Transparency:80%).Intel.Celeron M1.86GHz,DDR II.DIMM 1GB,RJ45*2,USB*4,COM*2.DC10~30V,HDD/250GB,AOT,WP
NPS1535-ETAW-363-A01	15" LED B/L 1000Nits,Touch.Screen(Transparency:80%).Intel Core 2 Duo 2.16GHz.DDR II DIMM 2GB,RJ45*2,USB*4.COM*2,AC 100~240V,HDD/250GB.AOT,WP
NPS1535-ETAW-363-A02	15"LED B/L 1000Nits.Touch Screen(Transparency:80%).IntelCore 2 Duo2.16GHz,DDRII.DIMM 2GB,RJ45*2,USB*4,COM*2.DC10~30v,HDD/250GB,AOT,WP
NPS1735-ETAW-142-A01	17"LED B/L 1000nits.Touch Screen(Transparency:80%).IntelCeleron M 1.86GHz,DDR II.DIMM 1GB,RJ45*2,USB*4,COM*2.AC 100~240V,HDD/250GB,AOT,WP
NPS1735-ETAW-142-A02	17" LED B/L 1000nits.Touch Screen(Transparency:80%).Intel Celeron M 1.86GHz,DDR II.DIMM 1GB,RJ45*2,USB*4,COM*2.DC10~30V,HDD/250GB,AOT,WP
NPS1735-ETAW-363-A01	17"LED B/L 1000Nits,Touch.Screen(Transparency:80%).Intel Core 2 Duo 2.16GHz.DDR II DIMM 2GB,RJ45*2,USB*4.COM*2,AC 100~240V,HDD/250GB.AOT,WP
NPS1735-ETAW-363-A02	17"LED B/L 1000Nits,Touch.Screen(Trensparency:80%).Intel Core 2 Duo 2.16GHz.DDR II DIMM 2GB,RJ45*2,USB*4.COM*2,DC10~30V,HDD/250GB.AOT,WP
NPS1935-ETAW-142-A01	19" LED B/L 1000nits.Touch Screen(Transparency:80%).Intel Celeron M 1.86GHz,DDR II.DIMM 1GB,RJ45*2,USB*4,COM*2.AC 100~240V,HDD/250GB,AOT,WP
NPS1935-ETAW-142-A02	19" LED B/L 1000nits , Touch.Screen(Transparency:80),Intel.Celeron M 1.86GHz,DDR II DIMM.1GB,RJ45*2,USB*4,COM*2.DC10~30V,HDD/250GB,AOT,WP
NPS1935-ETAW-363-A01	19"LED B/L 1000Nits.Touch Screen(Transparency:80%).IntelCore 2 Duo2.16GHz,DDRII.DIMM 2GB,RJ45*2,USB*4,COM*2.AC 100~240V,HDD/250GB,AOT,WP
NPS1935-ETAW-363-A02	19",LED B/L 1000Nits.Touch Screen(Transparency:80%).Intel Core2 Duo 2.16GHz.DDR II DIMM 2GB,RJ45*2,USB*4.COM*2,DC10~30V,HDD/250GB,AOT,WP

**Global Headquarters**

8F, No.137, Lane 235, Bau-chiao Rd., Shin-dian Dist., New Taipei City, Taiwan  
Tel: +886-2-8919-1858  
Fax: +886-2-8919-1300  
sales@litemax.com.tw

**Litemax Technology, Inc.**

48501 Warm Springs, Blvd, Suite 110, Fremont, CA94539, USA  
Tel: +1-510-5097506  
usa@litemax.com

**Europe Service Center**

Julius-Faucher-Str.31,28307 Bremen, Germany  
Tel: +49-421-565-6811  
Fax: +49-421-565-6810

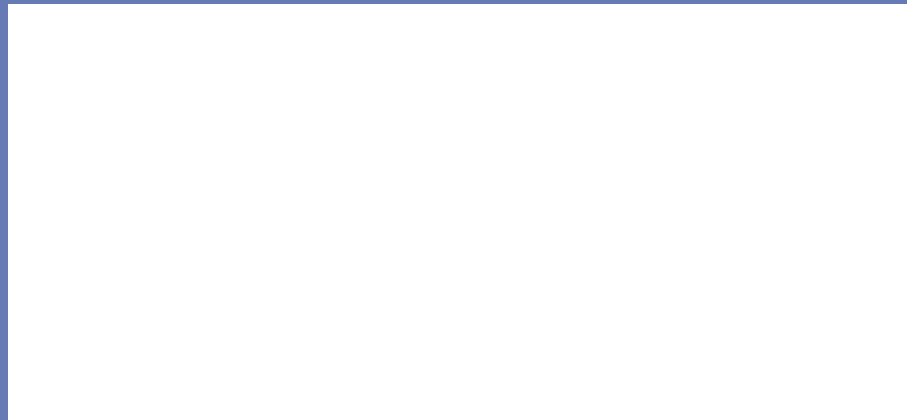


ISO 9001:2008  
No.0114-2003-AQ-RGC-RvA



ISO 14001:2004  
No. 0115-2003-AE-RGC-RvA

**Distributed by**



Copyright © 2014 Litemax Inc.  
LM20140101  
v.1

